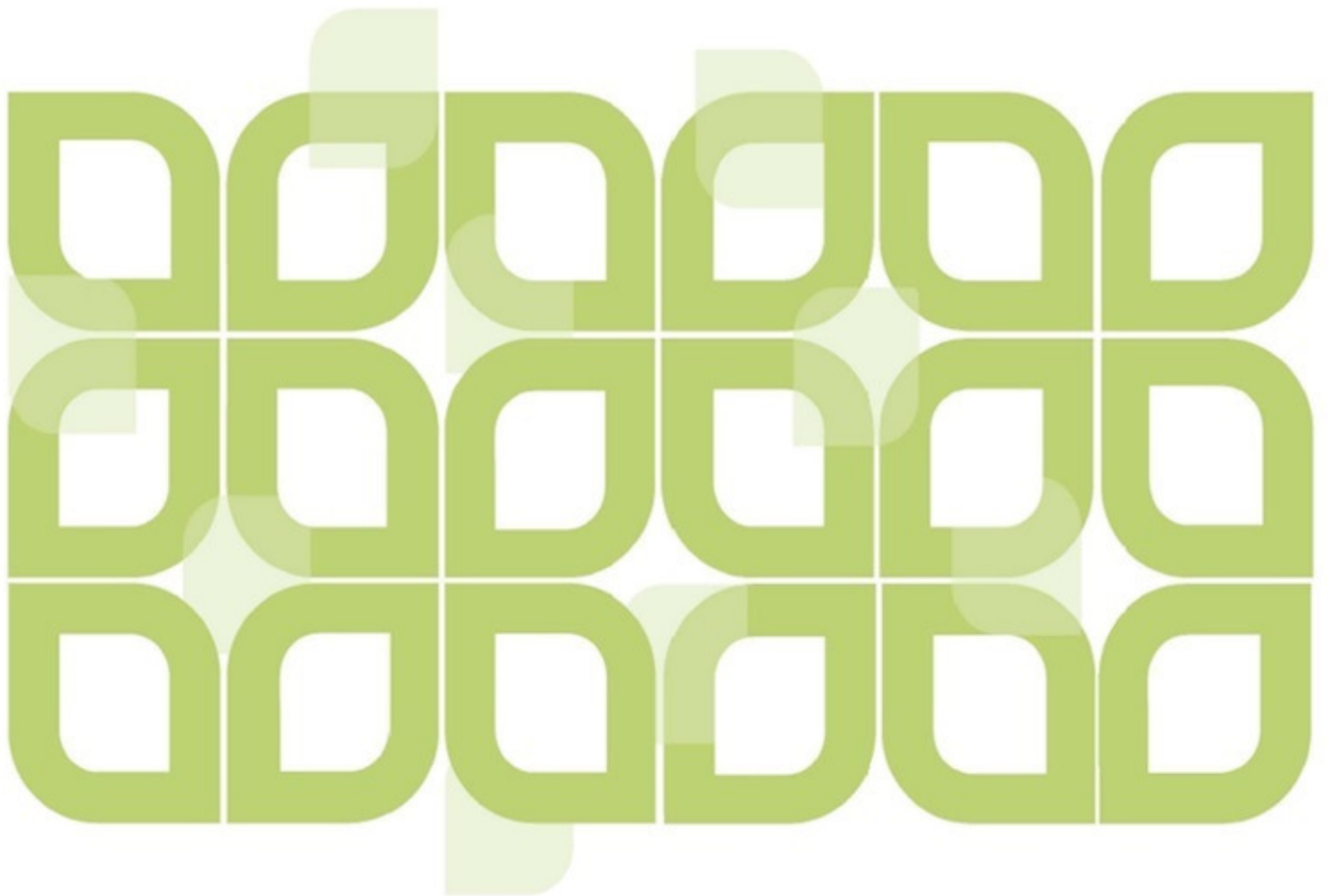

K25 Productions Pty Ltd

Proposed Filming at P5 Car Park Sydney Olympic Park.

Assessment of indirect impacts on biodiversity

August 2022



OMVI Ecological ABN 95 641 186 983

M: 0402 032 231 E: admin@omvi.com.au

Disclaimer

This document is and shall remain the property of OMVI Ecological. The document may only be used for the purpose for which it was commissioned and in accordance with the contract between the author and commissioning party. Unauthorised use of this document in any form whatsoever is prohibited. This report relies upon data, surveys, and measurements and results based on a short-term objective study, collected by OMVI and by other parties, in response to a brief provided and largely defined by the client (K25 Productions Pty Ltd). Although conclusions have been based on the available data and time, some professional judgement has been applied in reaching these conclusions due to the temporal limitations arising from the dynamic nature of available information, legislation, schedules, individual species and associated habitat. Every attempt has been made to ensure the accuracy and objectivity of the report findings, conclusions and recommendations. OMVI Ecological does not accept responsibility for its use beyond the scope of works.

Report to be cited as: OMVI Ecological (2022) Assessment of indirect impacts on biodiversity: Proposed Filming at P5 Car Park Sydney Olympic Park. for K25 production Pty. Ltd.

Photography: OMVI Ecological © else stated

Document Status

VERSION	AUTHOR	STATUS	FORMAT	CLIENT CONTACT	DATE
1	B Ryan	Draft Report	PDF	D Watts	24 Aug 2022
2	B Ryan	Final Report	PDF	D Watts	25 Aug 2022
3					
4					

Contents

1.	Introduction	1
1.1	Background Information	1
1.2	Hours of Operation	1
1.3	Noise Impacts	3
1.4	Increased Traffic	3
1.5	Lighting impacts	3
2.	Assessment of biodiversity	4
3.	References	6

1. INTRODUCTION

As part of the sustainability mandate, the Sydney Olympic Park Authority asks all new developments and activities to minimise negative impacts on Sydney's air quality, noise, light, and water quality. To this end as part of the development approval process the proponent has employed experts to assess the likely impacts of the proposal on surrounding receivers, including those with sensitive biodiversity such as residential areas, commercial areas and areas with extant biodiversity values.

The potential noise impacts have been assessed by Renzo Tonin & Associates (2022) and light by S Johnson (2022). These assessments, as required by Sydney Olympic Park Authority (SOPA), examined the likely impacts of the noise and light emanating from the P5 parking area within the Sydney Olympic Park precinct associated with the filming of a proposed production. The specific noise and light would be generated both day and night from:

- general filming operations, including from generators and people;
- pyrotechnics, and
- increased traffic movements associated with the project

1.1 Background Information

The subject site is the P5 parking area within the Sydney Olympic Park precinct. The subject site is proposed to be used as a green / blue screen filming area. This will facilitate the filming of all 'simulated' sequences whereby action conducted safely on the ground is made to appear to occur in environments that are impossible or unsafe. The set perimeter will include a wall of containers (seven high) that will support blue / green screen backgrounds.

The proposed area for filming will accommodate HOD parking, lighting cranes, catering facilities, toilet blocks, truck parking, containers and site office / First Aid sheds in areas marked on the site plan. The filming area is to be contained within a security fence with security staff on site 24/7.

Production support vehicles and trailers will be moved onsite only on filming days. The crew will arrive and leave in their private vehicles only on filming days. Other technical facilities will remain on site permanently during the filming period and these would be generators, demountable offices, toilet block, catering marquee and similar ancillary structures.

The proposed site plan is shown in Figure 1.

It should also be noted that the construction on Sydney's \$50 million inland surf park, has commenced directly across Hill Road. Day time noise and light, including traffic would be currently above normal levels and as such the increases predicted for the proposed filming are unlikely to be significantly higher than this, particularly noise levels during the construction hours across Hill Road.

1.2 Hours of Operation

Filming will occur between Wednesday 5 October 2022 and Friday 17 March 2023. The number of shooting days is estimated to be 25 to 30 days. Each of the filming days are of 10 hours duration. Daytime filming will take place between 7am and 5pm while night time filming would commence at 7pm and be completed by 5am.

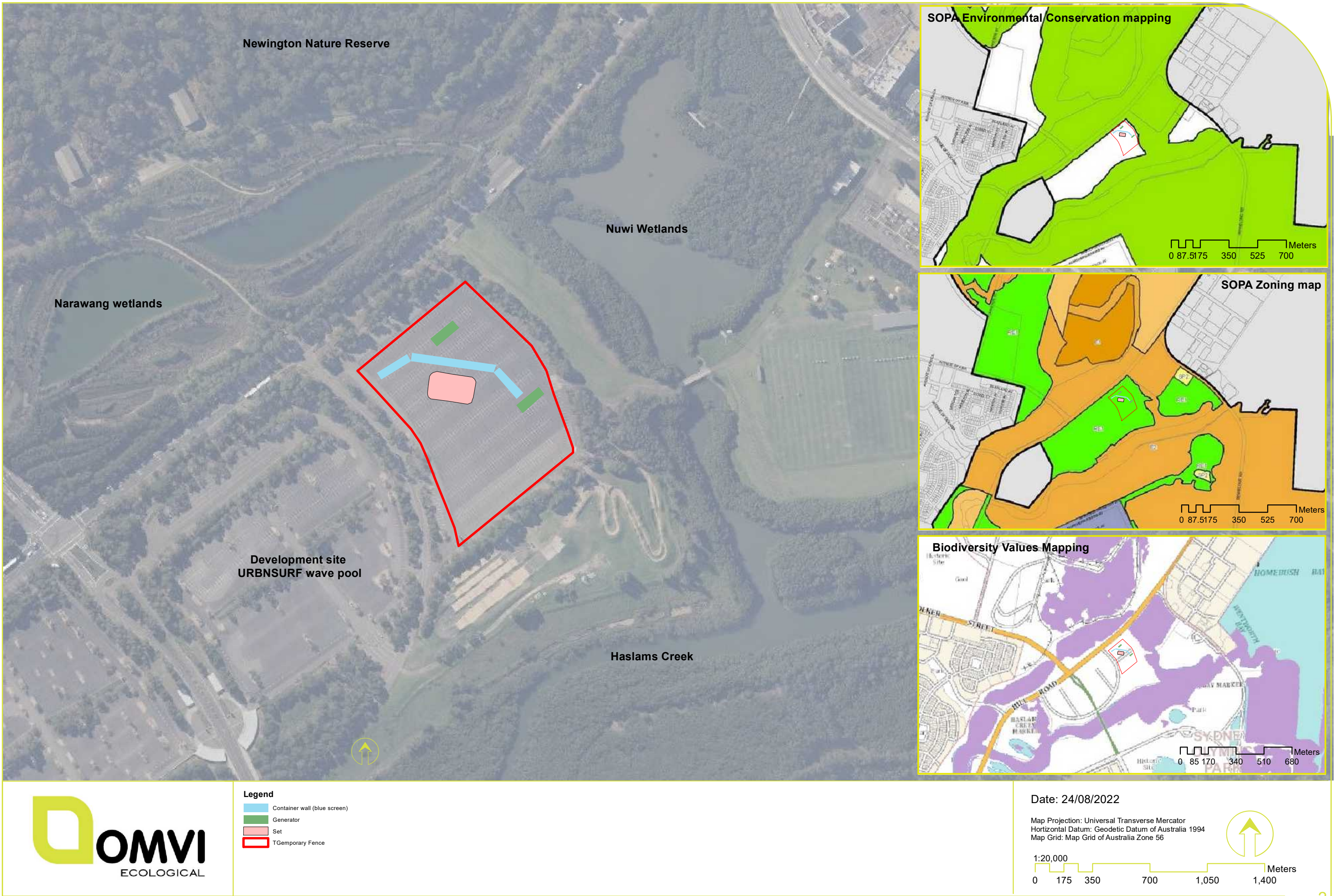


Figure 1: Propsoed filming set and assocaited hardstond within the P5 carpark, including zoning, environmenal conservation land, and biodiversity VALues mapping.

1.3 Noise Impacts

In the absence of any noise standards for ecological receivers SOPA has directed the proponent that human noise limits are generally applicable in this case to determine impacts of local biodiversity. Renzo Tonin and Associates (2022) determined through modelling that the filming activities were generally predicted to comply with the nominated criteria at all nearest affected receivers including those biodiversity sensitive receivers, including Narawang Wetlands, Nuwi Wetlands and Haslams Creek. These receivers were assessed as passive recreational receivers

1.4 Increased Traffic

Road traffic is likely to increase including the impacts of noise due to additional traffic generated during the proposed operations on Hill Road and feeders, but given the adjacent development of the waterpark and the existing local traffic, the increases are unlikely to be greatly different from extant traffic and were found to comply with the relevant road noise policy criteria (RMS 2015) in the noise assessment.

1.5 Lighting impacts

The lighting assessment and management plan (S Johnson 2022) concluded "... The proposal to film exterior blue/green screen sequences at P5 within the Sydney Olympic authority precinct shouldn't present any major disturbances for the amenity of the area regarding the lighting design, as evidenced by its previous use as such in past film productions."

2. ASSESSMENT OF BIODIVERSITY

The proposed set, blue screen and associated equipment is utilising an existing car park, and as such has minimal ecological values. There is no proposed vegetation removal and therefore little to no habitat for conservation dependant flora or fauna will be impacted directly. The main potential environmental impacts relate to the indirect impacts on surrounding areas, such as noise and light spill.

Several threatened species have been recorded within 1 kilometre of the proposal (Figure 2); however, none would utilise the sealed carpark as habitat. Therefore, this assessment relates to the impacts on nearby habitat, which have threatened flora and fauna species, protected migratory species, and endangered ecological communities present, such as the Narawang Wetlands, Haslams Creek and Newington Nature Reserve.

Populations of Green and Golden Bell Frogs (*Litoria aurea*) exist in these adjoining areas, as is habitat for migratory shorebirds, such as Latham's Snipe (*Gallinago hardwickii*). Narrow-leaved *Wilsonia* (*Wilsonia backhousei*), is also known for the foreshores of Haslams Creek and at the creek's confluence with Homebush Bay (see Figure 2). The temporary light spill between October and March as proposed has been assessed as similar to that currently occurring (S Johnson 2022), from street lighting and residential and commercial precincts.

The noise assessment has also determined through modelling that the increased noise, which is also only temporary, would not be above trigger levels at these receivers, using those trigger levels for passive human recreation as a surrogate for the local biodiversity (Renzo Tonin 2022). The same assessment also determined that the proposed filming was unlikely to be above any trigger levels for any receiver modelled including nearby residential areas. The proposed filming is therefore not likely to have an adverse effect on the life cycle of any species to the extent that a population, or individual, would be greatly impacted by the 6-month filming period. The noise from the proposal is less than that modelled (SJB Planning 2017) and likely observed from the adjacent wave pool construction, which has utilised heavy machinery and has involved earth, and bedrock removal. The noise from this construction is not likely to finish until the proposed opening of the pool in 2023, which overlaps that of the filming period.

There is also one endangered ecological community adjacent to the car park. Estuarine Saltmarsh EEC has been recorded along the lower extent of Haslam's Creek, within the tidal limit, and on foreshore areas of Homebush Bay. Like the species discussed above it is highly unlikely that the increased noise and light over only 6 months would impact these saltmarsh patches nor detriment to any individual plants.

Moreover, these indirect impacts have been partly mitigated through the preparation of a Film Management Plan (K25 Productions P/L, 2022), a Lighting Plan (S Johnson, 2022) and a Noise Impact Assessment (Renzo Tonin, 2022).

Key points from each of these management plan designs and reports have been produced to demonstrate that all reasonable efforts have been made to minimise any impacts on the surrounding natural environment."

The potential increased noise, and light from the proposed filming and set construction is therefore unlikely to detrimentally impact any ecological receiver to any significant extent considering management actions implemented have been designed to minimise these impacts on all receivers and that the modelling and assessment undertaken show that noise and light from the proposed filming will be below set thresholds.



Legend

Car Park P5

NPWS_Estate

Date: 24/08/2022

Map Projection: Universal Transverse Mercator
Horizontal Datum: Geodetic Datum of Australia 1994
Map Grid: Map Grid of Australia Zone 56

1:10,115

0 90 180 360 540 720 Meters

Figure 2: Threatened species recorded within a kilometre of the proposal (BioNet Atlas accessed August 2022)

3. REFERENCES

K25 Productions Pty. Ltd. (2022). Filming Management Plan. Sydney Olympic Park Authority P5.

Renzo Tonin and Associates (2022) Sydney Olympic Park P5 Noise Assessment for Filming Activities. A report prepared for K25 Productions Pty Ltd. 19 August 2022.

Roads and Maritime Services (2015) Noise Criteeria Guidline. RMS14.583.

Stephen Johnson (2022) Filming Management Plan: P5 Blue/Green Screen Filming area. A report prepared for K25 Productions Pty Ltd. No date provided.

SJB Planning (2017) URBNSURF Sydney –Pod B P5 Carpark, Hill Road, Sydney Olympic Park. Environmental Impact Statement for State Significant Development (SSD 7942). Published June 2017.